



Cembre



NEW GPT HAND TOOL RANGE

professional

Robust-A

Agil-E

For every professional, using quality tools specific for each job is essential; Cembre, always attentive to the needs of the electrical sector, has developed a new range of hand tools made specifically to meet the needs of the commercial and industrial installer.

SCISSORS

SCREWDRIVERS

SOCKET & TORQUE WRENCHES

PLIERS, NIPPERS & GRIPS

TOOL HOLDERS & KITS

SPANNERS & HAMMERS

CUTTERS, SAWS & FILES

DIGITAL INSTRUMENTS

TAPES, LEVELS & LINES

HOLE MAKING ACCESSORIES

Robust-A SC5X

Extremely lightweight and robust for safe, easy handling and comfort.

Easy cutting of conductors upto 50 sqmm using the shaped grooves in each blade.

Safe and easy operation even when wearing work gloves.

Professional scissors with a **Special Steel frame** for high resistance and a long life.

Special Steel Frame



Micro serrated blade



Anti-loosening pivot



Dual-compound material



Case with swivel belt hook



Agil-E SC6X

New*lightweight design
only 86 grams*

Weighing only 86 grams these lightweight scissors feature tapered blades and ergonomically shaped handles to aid speed of operation and consistent results.

The design of the blades allows the scissors to be used in confined spaces and affords the user minimum effort when cutting conductors.

Handles have an integrated crimping system for end sleeves.



Micro serrated blade



Anti-loosening pivot



Dual-compound material



Case with belt fastening system



Professional **SCISSORS**

Professional Scissors SC5X

Main Features

Type	Dimensions mm			Weight g
	Length	Width	Height	
SC5X	162	77	18	121

Professional scissors with a **Special Steel frame** for high resistance and long life. Ergonomic and dual-compound plastic handles: glass fibre reinforced Polyamide and inserts of soft Rubber.

The anti-loosening pivot and bevelled profile allow the accurate and consistent alignment of the blades.

High hardness blades (58 HRC) and an anti-slip serrated edge for making precise cuts even on more difficult materials.

Shaped groove for cutting conductor up to 50 mm².

Supplied with carry case and swivel belt hook.

Professional Scissors SC6X

Main Features

Type	Dimensions mm			Weight g
	Length	Width	Height	
SC6X	153	73,6	18	86

Weighing only 86 grams these lightweight scissors feature tapered blades and ergonomically shaped handles to aid speed of operation and consistent results.

The design of the blades allows the scissors to be used in confined spaces and affords the user minimum effort when cutting conductors.

Handles have an integrated crimping system for end sleeves.

The anti-loosening pivot and bevelled profile allow the accurate and consistent alignment of the blades.

High hardness blades (58 HRC) and an anti-slip serrated edge for making precise cuts even on more difficult materials.

Shaped groove for cutting conductor up to 50 mm².

Supplied with carry case and belt fastening system.

Robust-A



New

Agil-E





Professional Scissors SC3X

Type	Dimensions mm			Weight g
	Length	Width	Height	
SC3X	150	75	20	86

Professional scissors with a serrated blade and dual-compound plastic handles with hand protection.
The anti-loosening pivot and bevelled profile allow the accurate and consistent alignment of the blades required for perfect cuts and stripping.
The high hardness of the blades (56HRC) and with their shaped grooves ensure the cutting of flexible conductors up to 35 mm².



Professional Scissors SC1

Type	Dimensions mm			Weight g
	Length	Width	Height	
SC1	145	76	17	78

Professional scissors with ergonomic and dual-compound plastic handles.
High tensile steel blades allowing for excellent strength and performance.
Provided with specially micro-serrated blades and a robust pivot.

Professional **SCREWDRIVERS**

The Cembre range of insulated screwdrivers have dual compound handgrips and an ergonomic design making them particularly practical and comfortable in the following modes of use:

- Normal
- Fast
- Forced

To ensure quick identification, the type and size of the head are indicated in different colours on the back of the handle.

The heads are made from Chromium Molybdenum steel with a hardness of 55-59 HRC and are hardened with Phosphoric Manganese Acid to increase corrosion resistance; the size of the insulating cover allows it to be inserted into tight spaces.

Each individual screwdriver is tested in accordance with EN 60900



CA1000V
EN/IEC - 60900



Blade type identification on the back of the handle



Head type identification codes:

- **White** - Flat head
- **Yellow** - "Phillips" cross head
- **Green** - "Pozidriv" cross head
- **Red** - "Phillips" combination head
- **Blue** - "Pozidriv" combination head
- **Orange** - "Torx" six point star head

Steel tips



Ergonomic handle



Hand guard



Attachment hole



**Flat head screwdrivers****Main Features**

Type	Head Dimensions mm		Blade Length mm	Total Length mm	Weight g
	Width	Thickness			
SDC3X100-KV	3	0,5	100	185	32
SDC3.5X100-KV	3,5	0,6	100	185	35
SDC4X100-KV	4	0,8	100	205	58
SDC5.5X125-KV	5,5	1,0	125	230	78
SDC6.5X150-KV	6,5	1,2	150	265	115
SDC8X175-KV	8	1,2	175	298	181

**PH Phillips cross head screwdrivers****Main Features**

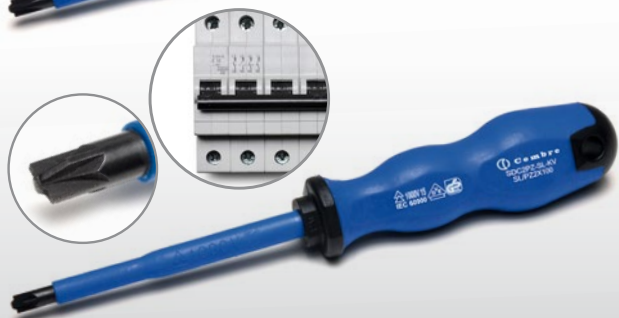
Type	Head Dimensions mm		Total Length mm	Weight g
	Size	Blade Length		
SDC0PH-KV	PH0	60	145	29
SDC1PH-KV	PH1	80	188	64
SDC2PH-KV	PH2	100	215	94

**PZ Pozidriv cross head screwdrivers****Main Features**

Type	Head Dimensions mm		Total Length mm	Weight g
	Size	Blade Length		
SDC0PZ-KV	PZ0	60	145	29
SDC1PZ-KV	PZ1	80	188	64
SDC2PZ-KV	PZ2	100	215	94

**PHSL Phillips combination head screwdrivers****Main Features**

Type	Head Dimensions mm		Total Length mm	Weight g
	Size	Blade Length		
SDC1PH-SL-KV	PH1 SL	80	188	65
SDC2PH-SL-KV	PH2 SL	100	215	94

**PZSL Pozidriv combination head screwdrivers****Main Features**

Type	Head Dimensions mm		Total Length mm	Weight g
	Size	Blade Length		
SDC1PZ-SL-KV	PZ1 SL	80	188	65
SDC2PZ-SL-KV	PZ2 SL	100	215	94

**TORX six point star head screwdrivers****Main Features**

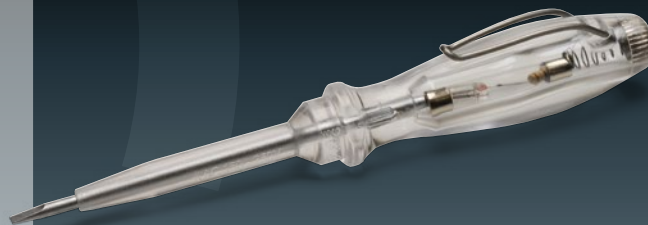
Type	Head Dimensions mm		Total Length mm	Weight g
	Size	Blade Length		
SDC10TX-KV	TX10	80	185	60
SDC15TX-KV	TX15	80	185	63
SDC20TX-KV	TX20	100	205	68
SDC25TX-KV	TX25	100	205	73
SDC30TX-KV	TX30	115	230	100
SDC40TX-KV	TX40	130	245	118

**Flat head screwdriver with mains tester****Main Features**

Type	Dimensions mm		Total Length mm	Weight g
	Head Size	Blade Length		
SDC3X60-PD	3	65	153	34

A fully functioning flat head screwdriver with a completely transparent handle allowing visibility of the indicator from any angle, ensuring high safety.

- Transparent handle
- High quality head
- Ergonomic design
- Pocket clip with spring

**Screwdriver with 45° angled flat head****Main Features**

Type	Head Dimensions mm		Blade length mm	Total Length mm	Weight g
	Size	Thickness			
SDC2.5X55B	2,5	0,55	55	143	28
SDC3.5X55B	3,5	0,55	55	143	29

Screwdriver with angled head, ideal for terminals, sensors and actuators.

**Flat head stubby screwdriver****Main Features**

Type	Head Dimensions mm		Blade length mm	Total Length mm	Weight g
	Size	Thickness			
SDCS2.5X55	5,5	2,5	25	75	37

**Phillips cross head stubby screwdriver PH****Main Features**

Type	Head Dimensions mm		Total Length mm	Weight g
	Size	Blade Length		
SDCS1PH	PH1	25	75	38

**Set of 7 Screwdrivers - KSDC7-KV****Main Features**

Set consists of:

Type	Head Dimensions mm		Total Length mm	Weight g
	Size	Blade Length		
SDC3X100-KV	3	100	185	32
SDC4X100-KV	4	100	205	58
SDC5,5X125-KV	5,5	125	230	78
SDC6,5X150-KV	6,5	150	265	115
SDC0PH-KV	PH0	60	145	29
SDC1PH-KV	PH1	80	188	64
SDC2PH-KV	PH2	100	215	94





Deep point socket



Hexagonal
lever point

Reduced shank
diameter



Hex socket screwdrivers with reduced shank diameter



Main Features

Type	Dimensions Socket mm	Blade Length mm	Total Length mm	Weight g
SDC7X125-HEX	7	125	243	97
SDC8X125-HEX	8	125	243	114
SDC9X125-HEX	9	125	243	132
SDC10X125-HEX	10	125	243	152

Hex socket screwdrivers with reduced shank diameter.

- Ergonomic handgrip for comfortable use without strain.
- Reduced external shank diameter allows the tool to be used in narrow spaces (relays and switches).
- Deep point socket ideal for long threads.
- Hexagonal lever point facilitates extra force without strain.
- Standards: ISO 6750 - ISO 2236



Universal key for switchboards UKC4

Main Features

Type	Dimensions mm			Weight g
	Length	Width	Height	
UKC4	72	72	14	92

Universal key for switchboards

Equipped with:

Triangular shape 7-8 mm

Double notch 3-5 mm

Square shape 5-6, 7-8 mm

Screwdriver bit and hexagonal holder

Professional **PLIERS**

The design of Cembre insulated pliers and the use of dual-compound plastic material in the handle cover optimise the distribution of the force over the entire surface in contact with the palm of the hand.

This leads to:

- A reduction of the effort applied
- A greater transmitted force
- Safer grip
- Prevention of injury to the fingers between the handles

As for all Cembre insulated tools, each individual pair of pliers is tested in accordance with EN 60900



C 1000V
EN/IEC - 60900:2004



Gripping and cutting edges

Soft articulated joint



Ergonomic hand grip





UPC Universal pliers

Main Features

Type	Total Length mm	Head Dimensions mm		Weight g
		Width	Thickness	
UPC180-KV	180	27	11	287
UPC200-KV	200	32	11,6	381

TR Nippers

Main Features

Type	Total Length mm	Head Dimensions mm		Weight g
		Width	Thickness	
TR160-KV	160	19	10	229

TR Heavy duty nippers

Main Features

Type	Total Length mm	Head Dimensions mm		Weight g
		Width	Thickness	
TR200-KV	200	30	13	306

SPC Straight nose pliers

Main Features

Type	Total Length mm	Head Dimensions mm		Weight g
		Width	Thickness	
SPC200-KV	200	21,5	10,7	257

SPC 45° nose pliers

Main Features

Type	Total Length mm	Head Dimensions mm		Weight g
		Width	Thickness	
SPC200B-KV	200	21,5	10,7	261

WPC Pipe grips

Main Features

Type	Total Length mm	Head Dimensions mm		Weight g
		Width	Thickness	
WPC250-KV	250	29	7,7	380

WSC Wire stripper

Main Features

Type	Total Length mm	Head Dimensions mm		Weight g
		Width	Thickness	
WSC180-KV	180	21,7	9,5	240

For insulated cables from 0,75 to 6 mm²

New

Cembre offers a range of tool holders designed to provide professional users with practical and neat ways to optimise their time and working conditions.

SOFT Line**Bag CTSB1****Main Features**

Type	Dimensions mm			Weight kg
	Length	Width	Height	
CTSB1	420	250	340	3

Practical tool bag in robust fabric, with 2 separate compartments to neatly arrange hand tools. Additional equipment may be accommodated via handy hooks and external pockets while documents are safely stored inside. A shoulder strap and sturdy metal handle make it easy to carry.



SOFT Line**Bag Kit CTSB1-1****Main Features**

Type	Dimensions mm			Kit Weight kg
	Length	Width	Height	
KIT-CTSB1-1	420	250	340	5,6

CTSB1 equipped with selection of tools.

Tools contained in the kit:

Qty	type	description
1	SDC3X60-PD	mains tester
1	SDC3X100-KV	screwdriver 3x100
1	SDC3.5X100-KV	screwdriver 3,5x100
1	SDC4X100-KV	screwdriver 4x100
1	SDC5.5X125-KV	screwdriver 5,5x125
1	SDC1PH-KV	screwdriver ph1
1	SDC2PH-KV	screwdriver ph2
1	SDC1PZ-KV	screwdriver pz1
1	SDC2PZ-KV	screwdriver pz2
1	UPC180-KV	pliers 180 mm
1	SC5X	scissors SC5X
1	FLS3	measuring tape 3m
1	KAK9	allen keys
1	HB18	retractable cutter
1	HKS6	pocket hacksaw
1	LVL150	level 150 mm
1	HMR300	hammer

Bag Kit CTSB1-3**Main Features**

Type	Dimensions mm			Kit Weight kg
	Length	Width	Height	
KIT-CTSB1-3	420	250	340	6,8

CTSB1 equipped with selection of tools.

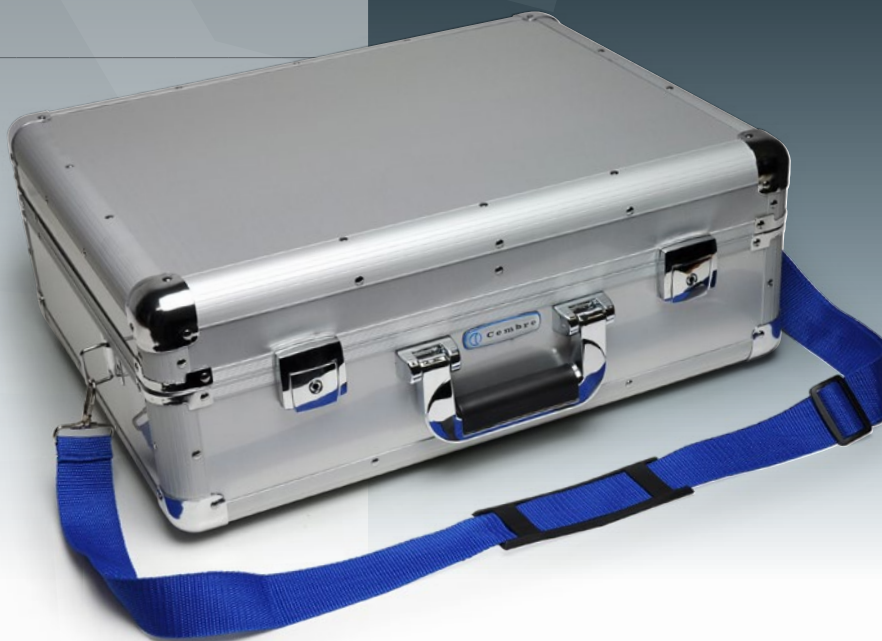
Tools contained in the kit:

Qty	type	description
1	SDC3X60-PD	mains tester
1	SDC3X100-KV	screwdriver 3x100
1	SDC3.5X100-KV	screwdriver 3,5x100
1	SDC4X100-KV	screwdriver 4x100
1	SDC5.5X125-KV	screwdriver 5,5x125
1	SDC1PH-KV	screwdriver ph1
1	SDC2PH-KV	screwdriver ph2
1	SDC1PZ-KV	screwdriver pz1
1	SDC2PZ-KV	screwdriver pz2
1	UPC180-KV	pliers 180 mm
1	TR160-KV	nippers 160 mm
1	SC5X	scissors SC5X
1	PTS4	wire stripper 0.2-6 mm ²
1	FLS5	measuring tape 5 m
1	KAK9	allen keys
1	KRK4	spanners with ratchet
1	UKC4	universal key
1	HB18	retractable cutter
1	HKS6	pocket hacksaw
1	LVL150	level 150 mm
1	HMR300	hammer

HARD Line**Case VAL-GPTA-N****Main Features**

Type	Dimensions mm			weight kg
	Length	Width	Height	
VAL-GPTA-N	470	360	185	4,8

Aluminium case containing two panels with elastic tool holders and an internal pocket for holding documents or a tablet. Thermoformed base with modular dividers. Fitted with an ergonomic carrying handle and a hinged lid with stop to limit the opening to 90°. Equipped with shoulder strap.



HARD Line**Case Kit VAL-GPTA-1****Main Features**

Type	Dimensions mm			Kit Weight kg
	Length	Width	Height	
KIT-VAL-GPTA-1	470	360	185	7,4

Case VAL-GPTA-N equipped with selection of tools.

Tools contained in the kit:

Qty	type	description
1	SDC3X60-PD	mains tester
1	SDC3X100-KV	screwdriver 3x100
1	SDC3.5X100-KV	screwdriver 3,5x100
1	SDC4X100-KV	screwdriver 4x100
1	SDC5.5X125-KV	screwdriver 5,5x125
1	SDC1PH-KV	screwdriver ph1
1	SDC2PH-KV	screwdriver ph2
1	SDC1PZ-KV	screwdriver pz1
1	SDC2PZ-KV	screwdriver pz2
1	UPC180-KV	pliers 180 mm
1	SC5X	scissors SC5X
1	FLS3	measuring tape 3m
1	KAK9	allen keys
1	HB18	cutter
1	HKS6	pocket hacksaw
1	LVL150	level 150 mm
1	HMR300	hammer

Case Kit VAL-GPTA-2**Main Features**

Type	Dimensions mm			Kit Weight kg
	Length	Width	Height	
KIT-VAL-GPTA-2	470	360	185	9,6

Case VAL-GPTA-N equipped with selection of tools.

**Tools contained in the kit:**

Qty	type	description
1	SDC3X60-PD	mains tester
1	SDC3X100-KV	screwdriver 3x100
1	SDC3.5X100-KV	screwdriver 3,5x100
1	SDC4X100-KV	screwdriver 4x100
1	SDC5.5X125-KV	screwdriver 5,5x125
1	SDC1PH-KV	screwdriver ph1
1	SDC2PH-KV	screwdriver ph2
1	SDC1PZ-KV	screwdriver pz1
1	SDC2PZ-KV	screwdriver pz2
1	UPC180-KV	pliers 180 mm
1	TR160-KV	nippers 160 mm
1	SC5X	scissors SC5X
1	PTS4	wire stripper 0.2-6 mm ²
1	FLS5	measuring tape 5 m
1	KAK9	allen keys
1	KRK4	spanners with ratchet
1	UKC4	universal key
1	HB18	retractable cutter
1	HKS6	pocket hacksaw
1	LVL150	level 150 mm
1	HMR300	hammer

Trolley**Trolley TRL02****Main Features**

Type	Dimensions mm				Weight kg
	Length	Width	Closed handle height	Open handle height	
TRL02	480	250	400	1023	4,3

Practical trolley mounted tool bag made of robust fabric, with 2 separate internal compartments to neatly arrange hand tools. Easy front opening access and handy hooks, external pockets providing additional space and a document pouch on the inside of the lid.



Trolley**Trolley Kit TRL02-1****Main Features**

Type	Dimensions mm				Kit Weight kg
	Length	Width	Closed handle height	Open handle height	
KIT-TRL02-1	480	250	400	1023	6,8

Trolley TRL02 equipped with selection of tools.

Tools contained in the kit:

Qty	type	description
1	SDC3X60-PD	mains tester
1	SDC3X100-KV	screwdriver 3x100
1	SDC3.5X100-KV	screwdriver 3,5x100
1	SDC4X100-KV	screwdriver 4x100
1	SDC5.5X125-KV	screwdriver 5,5x125
1	SDC1PH-KV	screwdriver ph1
1	SDC2PH-KV	screwdriver ph2
1	SDC1PZ-KV	screwdriver pz1
1	SDC2PZ-KV	screwdriver pz2
1	UPC180-KV	pliers 180 mm
1	SC5X	scissors SC5X
1	FLS3	measuring tape 3m
1	KAK9	allen keys
1	HB18	cutter
1	HKS6	pocket hacksaw
1	LVL150	level 150 mm
1	HMR300	hammer

Trolley Kit TRL02-2**Main Features**

Type	Dimensions mm				Kit Weight kg
	Length	Width	Closed handle height	Open handle height	
KIT-TRL02-2	480	250	400	1023	8,0

Trolley TRL02 equipped with selection of tools.

**Tools contained in the kit:**

Qty	type	description
1	SDC3X60-PD	mains tester
1	SDC3X100-KV	screwdriver 3x100
1	SDC3.5X100-KV	screwdriver 3,5x100
1	SDC4X100-KV	screwdriver 4x100
1	SDC5.5X125-KV	screwdriver 5,5x125
1	SDC1PH-KV	screwdriver ph1
1	SDC2PH-KV	screwdriver ph2
1	SDC1PZ-KV	screwdriver pz1
1	SDC2PZ-KV	screwdriver pz2
1	UPC180-KV	pliers 180 mm
1	TR160-KV	nippers 160 mm
1	SC5X	scissors SC5X
1	PTS4	wire stripper 0.2-6 mm ²
1	FLS5	measuring tape 5 m
1	KAK9	allen keys
1	KRK4	spanners with ratchet
1	UKC4	universal key
1	HB18	retractable cutter
1	HKS6	pocket hacksaw
1	LVL150	level 150 mm
1	HMR300	hammer

HARD Line**Chest VAL-GPT****Main Features**

Type	Dimensions mm			Weight kg
	Length	Width	Height	
VAL-GPT	557	230	245	3,7

Plastic tool chest with small parts holder on the lid; Removable internal tool tray.
Metal latches; Aluminium handle and padlock facility.
Sufficiently robust to be used as a step when closed.
Stackable with other VAL GPT tool chests.

**Chest Kit VAL-GPT-1****Main Features**

Type	Dimensions mm			Chest Kit Weight kg
	Length	Width	Height	
KIT-VAL-GPT-1	557	230	245	5,48

VAL GPT equipped with selection of tools

Tools contained in the kit:

Qty	type	description
1	SDC3X60-PD	mains tester
1	SDC3X100-KV	screwdriver 3x100
1	SDC4X100-KV	screwdriver 4x100
1	SDC5.5X125-KV	screwdriver 5,5x125
1	SDC6.5X150-KV	screwdriver 6,5x150
1	SDC1PH-KV	screwdriver ph1
1	SDC2PH-KV	screwdriver ph2
1	TR160KV	nippers 160mm
1	SC5X	scissors SC5X
1	FLS3	measuring tape 3m
1	HB18	cutter
1	HKS6	pocket hacksaw
1	LVL150	level 150 mm
1	HMR300	hammer



Pouch**Pouch CTBB1****Main Features**

Type	Dimensions mm			Weight g
	Length	Width	Height	
CTBB1	230	150	50	84

Made from soft and strong fabric, equipped with a fast stud belt fastening. It has handy preformed compartments for holding pliers, scissors and screwdrivers.

With SC5X scissor

Robust-A**Pouch Kit CTBB1-1****Main Features**

Type	Dimensions mm			Pouch Kit Weight g
	Length	Width	Height	
KIT-CTBB1-1	230	150	50	477

CTBB1 equipped with selection of tools.

Tools contained in the kit:

Qty	type	description
1	SC5X	scissors SC5X
1	SDC3X100-KV	screwdriver 3x100
1	SDC3.5X100-KV	screwdriver 3,5x100
1	SDC4X100-KV	screwdriver 4x100
1	SDC1PH-KV	screwdriver ph1
1	SDC2PH-KV	screwdriver ph2

Pouch Kit CTBB1-5**Main Features**

Type	Dimensions mm			Pouch Kit Weight g
	Length	Width	Height	
KIT-CTBB1-5	230	150	50	442

CTBB1 equipped with selection of tools.

Tools contained in the kit:

Qty	type	description
1	SC6X	scissors Agil-E
1	SDC3X100-KV	screwdriver 3x100
1	SDC3.5X100-KV	screwdriver 3,5x100
1	SDC4X100-KV	screwdriver 4x100
1	SDC1PH-KV	screwdriver ph1
1	SDC2PH-KV	screwdriver ph2

With SC6X scissor

Agil-E

CW Combination Spanners**Main Features**

Type	mm	Open width mm	Ring width mm	Open thickness mm	Ring thickness mm	Total Length mm	weight g
CW60	6	16	10	4	5	110	15
CW70	7	17	11	4	5	120	19
CW80	8	19	13	4	6	130	24
CW100	10	23	16	5	7	150	35
CW110	11	26	17	5	7	160	47
CW130	13	30	20	6	8	180	68
CW140	14	32	21	6	9	190	79
CW150	15	34	23	6	10	200	89
CW170	17	37	26	7	10	220	124
CW180	18	39	27	7	11	230	149
CW190	19	41	28	7	11	240	166
CW220	22	47	32	8	13	270	227
CW240	24	51	35	8	14	290	293
CW270	27	56	39	9	15	320	374
CW300	30	62	43	10	15	350	475
CW320	32	66	46	10	16	370	580

- Chromium-vanadium steel tools
- Satin chrome finish.
- Ring head with 12 grip points, offset with respect to the handle to enable use in narrow spaces
- Open head tilted at 15° to reduce effort applied
- Standards: UNI ISO 3318 - ISO 7738 - DIN 3113



KCW12 Combination Spanner Set**Main Features**

Type	Dimensions KIT mm			weight g
	Length	Width	Height	
KCW12	460	362	65	1140

Set includes:

KCW12:

CW60 - CW70 - CW80 - CW100 - CW110
 CW130 - CW140 - CW150 - CW170 - CW180
 CW190 - CW220

Type	mm
CW60	6
CW70	7
CW80	8
CW100	10
CW110	11
CW130	13
CW140	14
CW150	15
CW170	17
CW180	18
CW190	19
CW220	22

**KCW12****KCW16 Combination Spanner Set****Main Features**

Type	Dimensions KIT mm			weight g
	Length	Width	Height	
KCW16	712	480	80	3250

Set includes:

KCW16:

CW60 - CW70 - CW80 - CW100 - CW110
 CW130 - CW140 - CW150 - CW170 - CW180
 CW190 - CW220 - CW240 - CW270 - CW300 - CW320

Type	mm
CW60	6
CW70	7
CW80	8
CW100	10
CW110	11
CW130	13
CW140	14
CW150	15
CW170	17
CW180	18
CW190	19
CW220	22
CW240	24
CW270	27
CW300	30
CW320	32

**KCW16**

Combination spanners with jointed ratchet head KRK4**Main Features**

Type	Kit Dimensions mm			Weight g
	Length	Width	Height	
KRK4	335	190	18	390

- Sizes included: 8-10-13-17 mm
- Chromium-vanadium steel
- 180° swivel head
- Ratchet mechanism with 72 teeth and recovery angle of 5°.

**Socket set 1/4" drive KRS47****Main Features**

Type	Dimensions KIT mm			Weight g
	Length	Width	Height	
KRS47	285	136	44	1655

- Standards: UNI ISO 3315 - DIN 3122

Metal case contains:

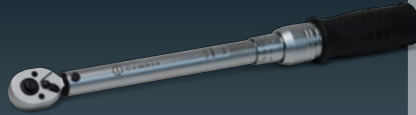
Qty	description
1	reversible ratchet wrench with socket retention system
2	extensions
1	articulated joint
1	T bar with sliding handle
1	screwdriver style holder
13	sockets 4 to 14 mm
4	extended sockets 8 to 13 mm
3	screwdriver sockets 4 to 6.5 mm
3	screwdriver sockets PH1, PH2, PH3
3	screwdriver sockets PZ1, PZ2, PZ3
6	hex socket spanners 3 to 8 mm
3	hex Allen keys 1.5 to 5 mm
6	torx socket keys T10 to T40



Cembre professional reversible torque wrench range TWC will provide optimum torque setting when the threaded fastenings are paired with the same size sockets.

Correct tightening of threaded fastenings prevents:

- thread damage in case of high loading
- unintentional loosening in case of low loading

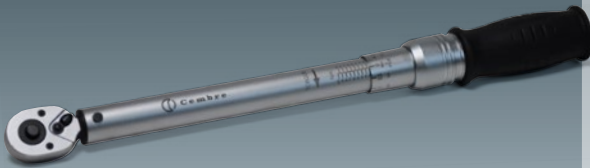


TWC10.50-14 Torque Wrench

Main Features

Type	Dimensions mm			Weight g
	Length	Width	Head Width	
TWC10.50-14	328	35	28	660

- Adjustment range Nm: 10-50
- Drive size in.: $\frac{1}{4}$

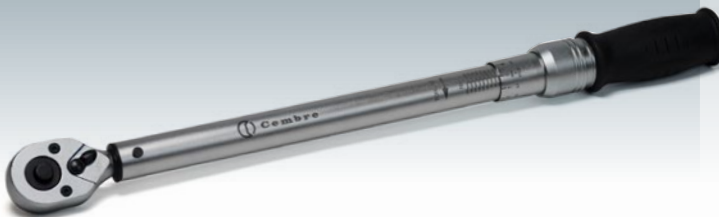


TWC20.100-38 Torque Wrench

Main Features

Type	Dimensions mm			Weight g
	Length	Width	Head Width	
TWC20.100-38	435	45	35	1300

- Adjustment range Nm: 20-100
- Drive size in.: $\frac{3}{8}$

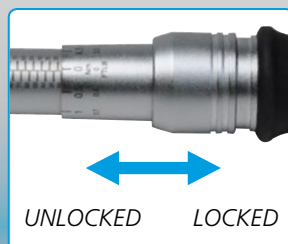
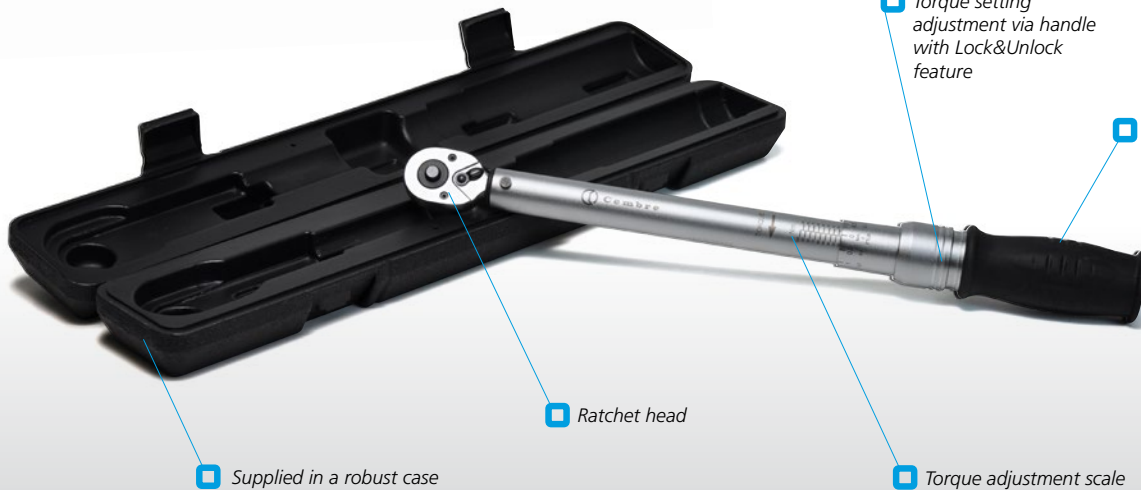


TWC40.200-12 Torque Wrench

Main Features

Type	Dimensions mm			Weight g
	Length	Width	Head Width	
TWC40.200-12	510	45	40	1506

- Adjustment range Nm: 40-200
- Drive size in.: $\frac{1}{2}$



Deep hexagonal sockets 1/2" drive DSC**Main Features**

Type	mm	Dimensions mm			Weight g
		Length	Ø Ext. hexagon	Ø Ext. drive	
DSC12-170L	17	77	23,8	22	120
DSC12-190L	19	77	25,7	24	134
DSC12-240L	24	77	31,8	27,8	210
DSC12-300L	30	77	39,9	34	300
DSC12-320L	32	77	41,8	35,8	336

- Chromium-vanadium steel • Satin chrome finish
- Standards: UNI ISO 2725 - DIN 3124

**Adapters KA****Main Features**

Type	Length	Dimensions mm		Ø Female	Weight g
		□ Female	■ Male		
KA14-38	26,5	1/4	3/8	13,9	21
KA38-14	26,3	3/8	1/4	18,8	25
KA38-12	36,1	3/8	1/2	19,2	52
KA12-38	35,99	1/2	3/8	21,7	52

- Chromium-vanadium steel • Satin chrome finish
- Standards: UNI ISO 3316 - DIN 3123

**1/2" Reversible ratchet wrench CRH12****Main Features**

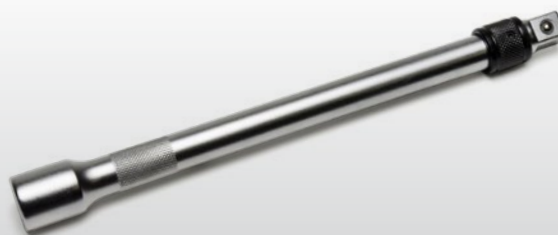
Type	Dimensions mm			Weight g
	Length	Height	Head Width	
CRH12	260	38	40	547

- Mechanism with 72 teeth and a recovery angle of 5°
- Reversible ratchet system • Ergonomic handle in dual-compound material
- Satin chrome finish • Chromium-vanadium steel
- Standards: UNI ISO 3315 - DIN 3122

**1/2" Drive extension 250 mm long EBC12-250****Main Features**

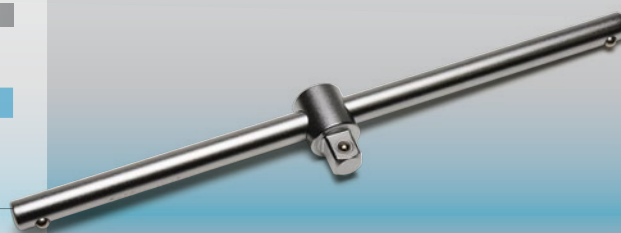
Type	Length mm		Weight g
	Length	Weight	
EBC12-250	250	441	

- Socket quick release system • Chromium-vanadium steel
- Satin chrome finish • Standards: UNI ISO 3316 - DIN 3123

**1/2" Drive T bar with sliding handle STBC12-300****Main Features**

Type	Dimensions mm			Weight g
	Length	Height	Head Width	
STBC12-300	300	25	24	365

- Chromium-vanadium steel • Satin chrome finish
- Standards: UNI ISO 3315 - DIN 3122



**Adjustable wrench AWC300****Main Features**



Type	Dimensions mm			Weight g
	Max Opening	Length	Width	
AWC300	34	300	-	620

- Chromium-vanadium steel wrench
- Phosphate finish
- Equipped with rapid adjustment and gap size measurement scale
- Wide-opening jaws for greater adaptability

**Set of 9 male Allen keys KAK9****Main Features**

Type	Kit Dimensions mm			Weight g
	Length	Width	Height	
KAK9	300	100	31	430

- Sizes included: 1.5-2-2.5-3-4-5-6-8-10 mm
- Chromium-vanadium steel
- Long reach type
- Spherical head for use up to 30°
- Equipped with carrying case

A/F (mm)	 (mm)	 (mm)
1,5	78	14
2	84	16
2,5	92	18
3	102	20
4	110	24
5	123	28
6	144	32
8	163	36
10	178	40

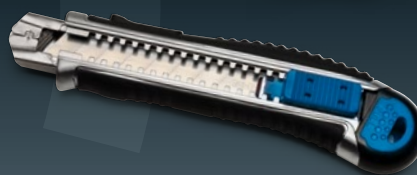
Retractable Cutter HB18**Main Features**

Type	Dimensions mm			Weight g
	Length	Width	Height	
HB18	170	32	17	223

Replaceable blade, adjustable from 18 mm and internal autoloader with 5 blades.
Steel blade, metal handle, with soft Rubber anti-slip coating.
Safety lock for blade.



Special blade
and safety lock

**Hacksaw HKS12****Main Features**

Type	Dimensions mm			Weight g
	Length	Width	Height	
HKS12	400	140	32	600

Hacksaw with 300 mm blade, dual-compound plastic frame, with soft anti-slip handle for a firm and secure grip.
Tensioner in the handle.

**Hacksaw HKS6****Main Features**

Type	Dimensions mm			Weight g
	Length	Width	Height	
HKS6	270	115	20	215

Hacksaw with 150 mm blade, metal frame, with 6 adjustments of the angle of the blade.
Soft Rubber anti-slip handle.

**Blade BL12HKS**

BL12HKS Spare blade for **HKS12** (5 pieces)

Blade BL6HKS

BL6HKS Spare blade for **HKS6** (10 pieces)

**Files SFC200 - RFC200**

Second-cut square file SFC200	File Section mm	File Length mm	handle Length mm	Total Length mm	Weight g
	8	200	110	310	
Second-cut round file RFC200	File diam. mm	File Length mm	handle Length mm	Total Length mm	Weight g
	8,3	200	110	310	

Carbide steel
Hardness 62±2 HRC





Hammer HMR300

Main Features

Type	Dimensions mm			Weight g
	Length	Width	Height	
HMR300	300	104	23	300

300 g bench hammer with patented anti-vibration triple compound handle.
Aluminium alloy 6082 T6 P-Al Si 1 Mg Mn head.
External surface of the handle in Polyamide A2800.
Thermoplastic rubber grip.
Complete with handle sleeve.



Hammer HMR500W

Main Features

Type	Dimensions mm			Weight g
	Length	Width	Height	
HMR500W	320	106	27	500

500 g bench hammer with Ash handle.
Complete with handle sleeve.



Chisel with hand protector BLC250

Main Features

Type	Dimensions mm				Weight g
	Total length	Blade width	Ø shaft	Ø handle	
BLC250	250	23	16	34	492

23 mm Chromium-vanadium steel blade with sturdy thermoplastic hand protector



Centre Punch CPC100-8

Main Features

Type	Dimensions mm			Weight g
	Length	Tip	Hexagon	
CPC100-8	100	3	8	54

Chromium-vanadium steel with Chrome finish



Crowbar CPW500

Main Features

Type	Dimensions mm		Weight g
	Length	Ø Hex. square	
CPW500	500	16	1183

Hexagonal section
C40 steel

Digital Multimeter CM02

Main Features

Type	Dimensions mm			Weight g
	Length	Width	Height	
Multimeter CM02	190	94	46	400

For measuring:

- AC Current and Voltage, True-rms for accurate check of non-linear signals.
- AC/DC Voltage up to 750V~ and 1.000V=
- AC/DC Current up to 10A
- Resistance
- Continuity
- Capacitance
- Frequency

Special Functions

- Data Hold
- Diode Test
- Transistor hFE Test
- Continuity Buzzer
- Temperature Probe (supplied)
- Auto Power Off

Standards: EN 61326-1: 2006 & CE marking

CM02 Specification

Basic Function	Range	Best Accuracy
DC Voltage	400mV/4V/40V/400V/1000V	$\pm(0,5\%+4)$
AC Voltage	400mV/4V/40V/400V/1000V	$\pm(0,8\%+10)$
DC Current	400 μ A/4000 μ A/40mA/400mA/10A	$\pm(1\%+10)$
AC Current	400 μ A/4000 μ A/40mA/400mA/10A	$\pm(1,5\%+10)$
Resistance	400 Ω /4K Ω /40K Ω /400K Ω /4M Ω /40M Ω	$\pm(0,8\%+4)$
Capacitance	10nF	$\pm(5\%+20)$
	100nF/1 μ F/10 μ F/100 μ F	$\pm(3,5\%+8)$
	1mf/10mF/100mF	$\pm(5\%+10)$
Frequency	100/1000/10k/100k/1M/30Mhz	$\pm(0,5\%+10)$
Temperature	-20 $^{\circ}$ -1.000 $^{\circ}$ C	$\pm(1,0\%+5)$

Overvoltage category CAT IV - 600V

CAT I	CAT II	CAT III	CAT IV
Devices not directly connected to mains power	Household appliances and portable tools	Fixed installations and connected equipment	Electricity meters, external transformers



TRMS



**Measuring tapes FLS3 - FLS5****Main Features**

Type	Tape dimensions		Casing	Weight g
	Length	Width	Dimensions mm	
FLS3	3 m	16 mm	71x62x33	166
FLS5	5 m	19 mm	83x71x36	252

Professional measuring tapes with ergonomic hand grip, metal casing and rubber inserts. Tape coating in Polyamide to ensures durability, anti-friction and resistance to corrosion; with integrated magnetic hook.
Automatic lock and dual locking button.

Spirit Levels LVL150 - LVL200 - LVL400**Main Features**

Type	Dimensions mm		No. of tubes	Weight g
	Length	Width		
LVL150	150	22	2	105
LVL200	200	22	2	157
LVL400	400	22	2	248

Made from robust Aluminium profile, with precision 0.5 to 1 mm.
Shock resistant tubes and high absorption protective caps.



CONICAL STEPPED DRILL-BITS

Conical stepped drill-bit SC-PG1**Main Features**

Type	Hole Ø range mm	Steps		Drill size mm		Weight g
		N°	Height mm	Length	Stem Ø	
SC-PG1	6 - 37	12	2	100	10	293

- Point geometry according to DIN 1412 C
- No pre-drilling
- Step angle 90°

SC-PG1 - Hole sizes

Step	Hole Ø mm	Clearance for PG thread
1	6.0	-
2	9.0	-
3	12.5	7
4	15.2	9
5	18.6	11
6	20.4	13.5
7	22.5	16
8	26.0	-
9	28.3	21
10	30.5	-
11	34.0	-
12	37.0	29

**Conical stepped drill-bits - General characteristics**

- Spiral shape facilitates quiet operation, precision of cut and removal of swarf
- Cutting capability unaffected by prolonged use
- Suitable for use on Ferrous metals and Thermoplastic materials up to 4 mm thickness
- Material: Cubic Boron Nitride (CBN)
- Corner point 118°
- Polished surface

Conical stepped drill-bit SC-M1**Main Features**

Type	Hole Ø range mm	Steps		Drill size mm		Weight g
		N°	Height mm	Length	Ø Stem	
SC-M1	6.5 - 40.5	11	2	96	10	303

- Point geometry according to DIN 1412 C
- No pre-drilling
- Step angle 90°

SC-M1 - Hole Sizes:

Step	Hole Ø mm	Clearance for Metric thread
1	6.5	-
2	8.5	-
3	10.5	-
4	12.5	M12
5	16.5	M16
6	20.5	M20
7	25.5	M25
8	29.0	-
9	32.5	M32
10	36.5	-
11	40.5	M40

**Conical countersink SK9038****Main Features**

Type	Head Dimensions mm		Total Length mm	Weight g
	Length	Ø		
SK9038	36	38	148	128

Conical flaring for unalloyed steels, with ergonomic handle in two component material.

- 90° head angle
- 6-edged head
- Maximum diameter of flaring 38 mm



SPIRAL DRILL-BITS

SB7-SDS-PLUS, SB-19, SB19-TIN

**SB19-TIN****SB19****SB7-SDS-PLUS****Set of 7 Hammer Drill-Bits SB7-SDS-PLUS****Main Features****Type****SB7-SDS-PLUS**

Drill-bits with a strengthened core, to allow optimum force transmission from start to finish. Made from steel worked at a low temperature to achieve maximum resistance, and created with a spiral structure for efficient waste extraction during operation.

Suitable for rock, brick work, concrete, cement, granite, tiles and marble.

Fits all hammer drills with SDS-Plus and Hilti TE 10 double-groove shanks.

Corresponding to standard: ISO 5468-DIN 8039. Weight 752 g.

Hammer Drill-bits SB7-SDS-PLUS:

Ø mm	Length mm	
	total	useable
5	110	50
6	110	50
6	160	100
8	110	50
8	160	100
10	160	100
12	160	100

Spiral Drill-bits SB19:**Spiral Drill-bits SB19-TIN:**

Ø mm	Length mm	
	total	useable
1	34	12
1,5	40	18
2	49	24
2,5	57	30
3	61	33
3,5	70	39
4	75	43
4,5	80	47
5	86	52
5,5	93	57
6	93	57
6,5	101	63
7	109	69
7,5	109	69
8	117	75
8,5	117	75
9	125	81
9,5	125	81
10	133	87

Sets of 19 Spiral Drill-Bits SB19**Main Features****Type****SB19**

High speed, high performance, steel spiral drill-bits.

Cross-wise sharpening allows for good balance, reducing strain during the operation.

Spiral angle: 25-30°

Groove profile: standard

Core: standard

Back angle: 118°

Point geometry: Shape C

Weight: 675 g

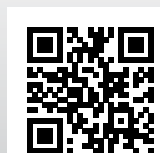
Main use: Steel N/mm² <900, Cast iron

Secondary use: Steel N/mm² <1100, Stainless steel, Aluminium, Brass, Bronze.

Type**SB19-TIN**

As type SB19 with additional:

TiN coating to increase operating life by 300 - 400%



Cembre S.p.A.
Telefono: +39 030 36921
Telefax: +39 030 3365766
www.cembre.it
E-mail: sales@cembre.com



Cembre Ltd.
Tel.: +44 01675 470440
Fax: +44 01675 470220
www.cembre.co.uk
E-mail: sales@cembre.co.uk



Cembre S.a.r.l.
Tél.: +33 01 60 49 11 90
Fax: +33 01 60 49 29 10
www.cembre.fr
E-mail: info@cembre.fr



Cembre España S.L.
Teléfono: +34 91 4852580
Telefax: +34 91 4852581
www.cembre.es
E-mail: comercial@cembre.es



Cembre GmbH
Telefon: +49 89 3580676
Telefax: +49 89 3580677
www.cembre.de
E-mail: sales@cembre.de



Cembre Inc.
Tel.: +1 732 225-7415
Fax: +1 732 225-7414
www.cembreinc.com
E-mail: Sales.US@cembreinc.com

IKUMA GmbH & Co. KG
Telefon: +49 7151 20536 - 60
Telefax: +49 7151 20536 - 80
www.ikuma.de
E-mail: info@ikuma.de

Any other country, please contact Cembre S.p.A. - Italy